

# BEN LOMOND REDWOOD PARK

## SUBDIVISION NUMBER THREE

And Resubdivision of lots in Blocks 7, 8, 9, 10, 11, 12 and 13 in Sub-division 2 of Rowardennan Redwood Park, as shown.

Portions of Sections 8 and 9, T.10 S.-R.2W.-MDM

SANTA CRUZ COUNTY, CALIFORNIA.

SCALE 1 INCH = 80 FEET.

G.G. McDaniel  
Civil Engineer.

Rowardennan Redwood Park Company, a corporation,  
and E. Bishop, Mabel F. Sayers, N. H. Spitzer, Isaiah  
Hartman, G. G. McDaniel, James W. Downs, Sadie J. Doyle,  
Thomas E. Doyle, Elizabeth De Lencie,  
owners of the land embraced within this map, hereby con-  
sent to the making thereof, and do not dedicate for  
public use any of the streets or roads shown thereon.

Dated: October 6, 1926.

Rowardennan Redwood Park Company  
By: E. Bishop  
President

Attest: Barbara M. Hartman  
Secretary  
E. Bishop  
N.H. Spitzer

Thomas E. Doyle  
State of California, ) SS  
County of Santa Cruz (

On October 6, 1926 before me, Barbara M. Hartman, Notary  
Public in and for said County of Santa Cruz, personally  
appeared E. Bishop and Stella McFigure, known to me  
to be the President and Secretary respectively of  
Rowardennan Redwood Park Company, the corporation that  
executed the within instrument, and acknowledged to me  
that such corporation executed the same.

Barbara M. Hartman  
Notary Public in and for the  
County of Santa Cruz,  
State of California.

State of California ) SS  
County of Santa Cruz (

On October 6, 1926, before me, Barbara M. Hartman, a Notary  
Public in and for said County of Santa Cruz, personally appear-  
ed E. Bishop, Mabel F. Sayers, N.H. Spitzer, Elizabeth De Lencie,  
Isaiah Hartman, G. G. McDaniel, James W. Downs, Sadie J. Doyle, and  
Thomas E. Doyle known to me to be the persons whose names are  
subscribed to and who executed the within instrument and ac-  
knowledged to me that they executed the same.

Barbara M. Hartman  
Notary Public in and for the County of  
Santa Cruz, State of California.

This map was drawn by me from my own survey of the ground.

G.G. McDaniel  
Licensed Surveyor.

I hereby certify that there are no liens for unpaid county  
taxes, except taxes not yet payable, against the tract of land  
covered by this map, or any part thereof.

Dated: October 7, 1926  
Victor J. ...  
County Auditor.

We hereby certify that we have examined the subdivision of  
land as shown on this map, for residence or commercial pur-  
poses, and hereby approve same.

Pha Norton  
County Assessor.  
Pha Norton  
County Surveyor.

The Board of Supervisors of Santa Cruz County approves  
this map, but does not accept any of the streets shown there-  
on as public highways.

Dated: October 7, 1926. The Board of Supervisors of  
Santa Cruz County, California.

By: Pha Norton  
Chairman  
Attest: H.E. Miller

County Clerk of the County  
of Santa Cruz, California,  
and ex-officio Clerk of the  
Board of Supervisors of  
said County.

By Philip Hayward  
Deputy Clerk

I hereby certify that a bond has been filed, approved  
by, and in amount, \_\_\_\_\_, fixed by  
the Board of Supervisors, and by its terms made to insure to  
the benefit of this County, conditioned for the payment of  
all taxes which are, at the time of filing this map, a lien  
against the tract covered by said map, or any part thereof,  
but not yet payable.

Dated: October 7, 1926

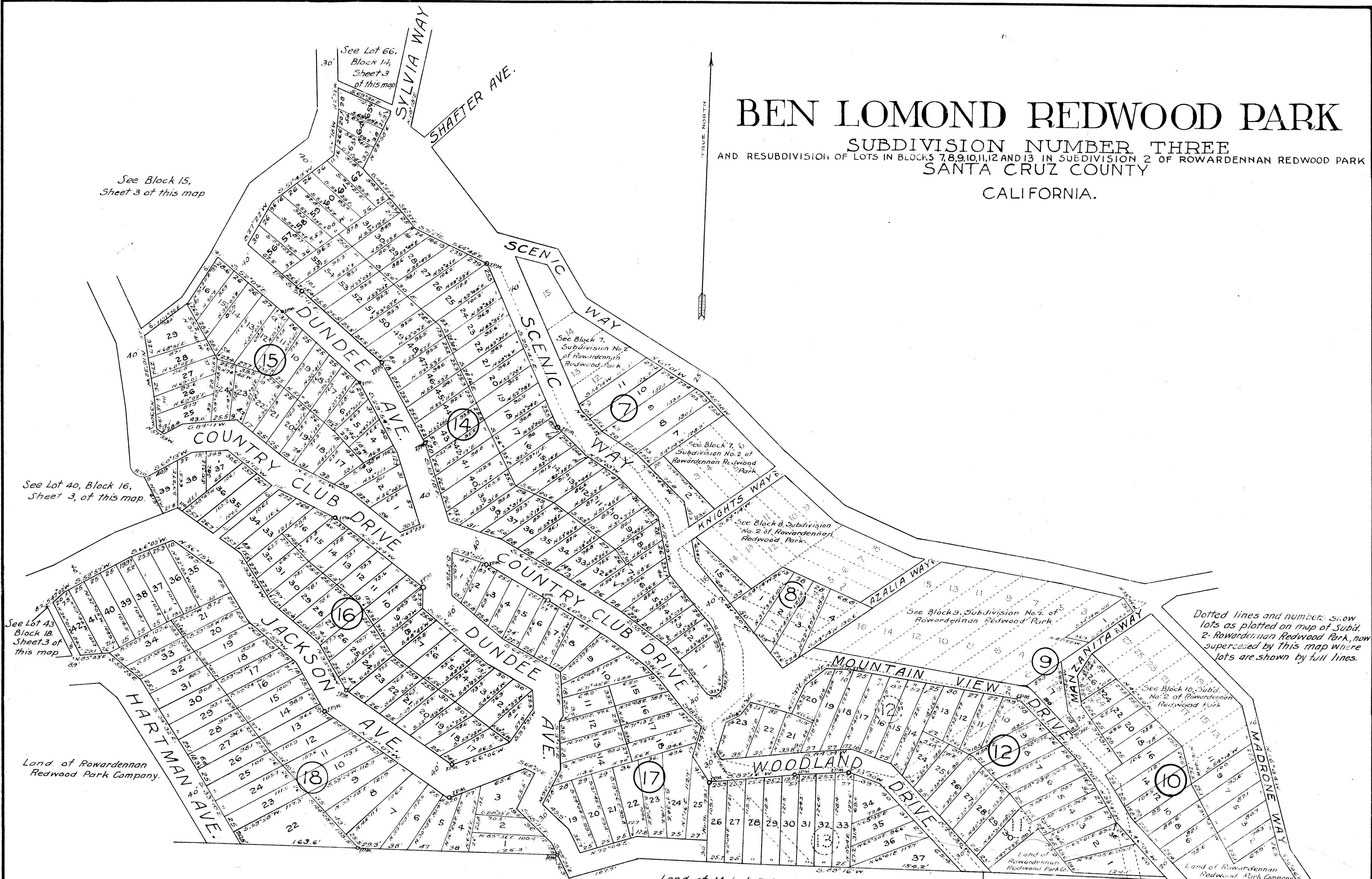
H.E. Miller  
County Clerk of the County of Santa Cruz,  
California, and ex-officio clerk of the Board  
of Supervisors of said County.

By Philip Hayward  
Deputy Clerk.

Filed October 9-1926  
Belle Lindsay  
County Recorder  
by June Lindsay  
Deputy

# BEN LOMOND REDWOOD PARK

SUBDIVISION NUMBER THREE  
AND RESUBDIVISION OF LOTS IN BLOCKS 7, 8, 9, 10, 11, 12 AND 13 IN SUBDIVISION 2 OF ROWARDENNAN REDWOOD PARK  
SANTA CRUZ COUNTY  
CALIFORNIA.



Dotted lines and numbers show lots as plotted on map of Subd. 2-Rowardennan Redwood Park, now superseded by this map where lots are shown by full lines.

See Lot 40, Block 16, Sheet 3, of this map.

See Lot 43, Block 18, Sheet 3 of this map

Land of Rowardennan Redwood Park Company.

Land of Mabel F. Sayers.

Land of May C. Walker

See Block 9, Subdivision No. 2 of Rowardennan Redwood Park

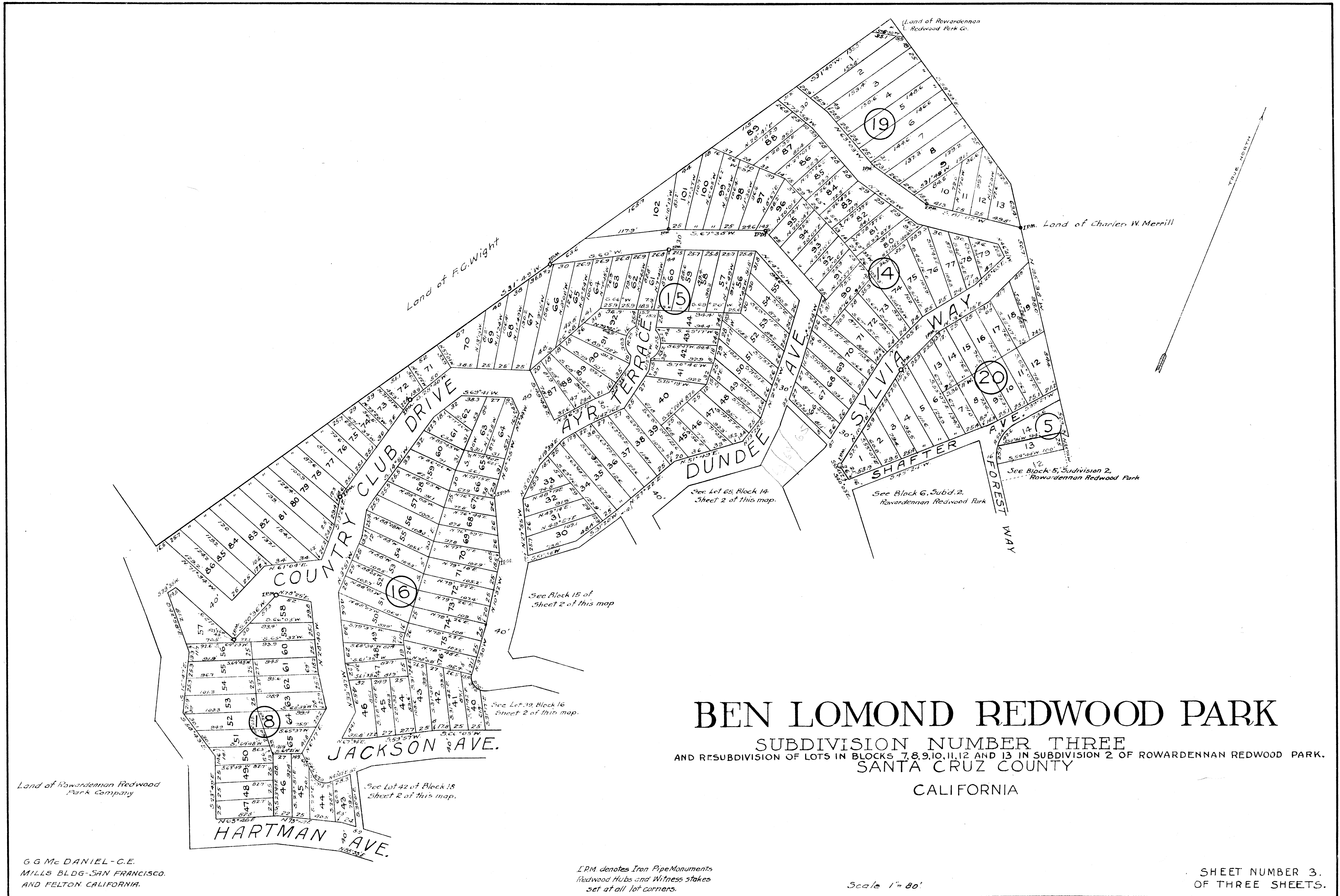
See Block 10, Subd. No. 2 of Rowardennan Redwood Park

G.G. Mc DANIEL - C.E.  
MILLS BLDG - SAN FRANCISCO  
AND FELTON, CALIFORNIA.

I.P.M. denotes Iron Pipe Monuments.  
Redwood Hubs and Witness stakes  
set at all lot corners.

Scale 1" = 80'

SHEET NUMBER 2.  
OF THREE SHEETS.



# BEN LOMOND REDWOOD PARK

SUBDIVISION NUMBER THREE  
AND RESUBDIVISION OF LOTS IN BLOCKS 7, 8, 9, 10, 11, 12 AND 13 IN SUBDIVISION 2 OF ROWARDENNAN REDWOOD PARK.  
SANTA CRUZ COUNTY

CALIFORNIA

Land of Rowardennan Redwood Park Company

G. G. Mc DANIEL - C. E.  
MILLS BLDG. - SAN FRANCISCO.  
AND FELTON, CALIFORNIA.

IPM denotes Iron Pipe Monuments  
Redwood Hubs and Witness Stakes  
set at all lot corners.

Scale 1" = 80'

SHEET NUMBER 3.  
OF THREE SHEETS.